

Electronic Display MA562

The display has a hard-wired manetic sensor and is used for linear or rotary data logging. The lowest-power technology enables the MA562 to be used as a low-cost quasi-absolute system over a period of approx. 10 years - currentless adjustments are, therefore, logged.



SIKO GmbH

Address

Weiherrmattenweg 2
79256 Buchenbach

Telephone

+49 (0) 7661/394-0

Fax

+49 (0) 7661/394-388

eMail

info@siko.de

Internet

www.siko.de



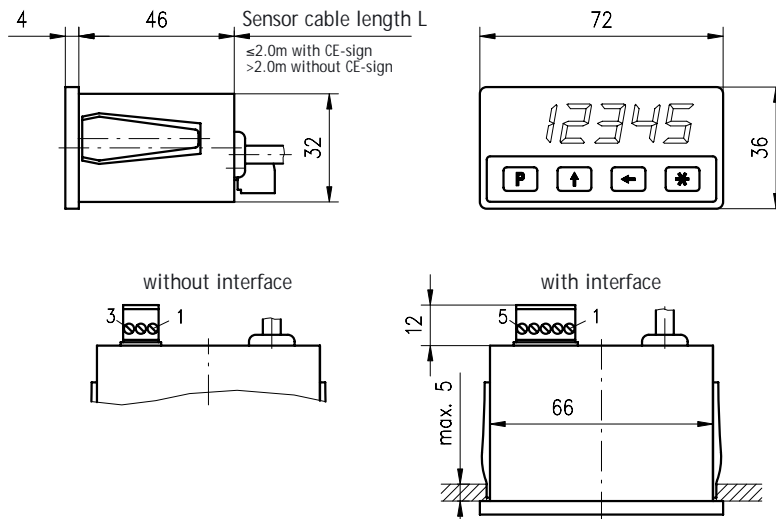
Features:

- 5-digit LED with minus sign
- backup battery (approx. 10 years of working life), thus quasi-absolute
- hard-wire sensor
- system accuracy: ±0.1mm
- repeat accuracy: ± 1 increment
- snap-in module housing

Feature	Order text	Additional information
Design	EG	mount type
Operating voltage	4 B	24VDC ±20%
Magnetic sensor	L C	rectangle with elongated hole
	F	round design
Sensor cable length	... D	in meter
Backup	i E	internal
	e	external
Interface/protocol	XX/XX F	without
	S3/00	RS485/ASCII-protocol
Software	S G	standard

Your ordering: MA562 - A - B - C - D - E - F - G

Electronic Display MA562

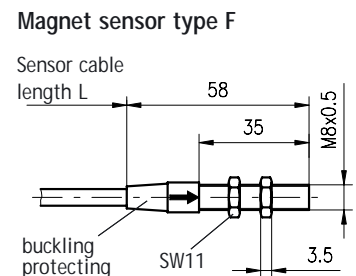
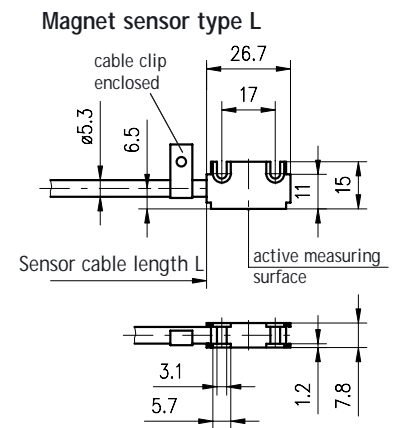


Pin assignment without interface

Pin	Signal	Pin	Signal
1	Ext Backup	1	N.C.
2	+UB	2	+UB
3	GND	3	GND

Pin assignment with interface

Pin	Signal	Pin	Signal
1	Data A	1	Data A
2	Data B	2	Data B
3	Ext Backup	3	N.C.
4	+UB	4	+UB
5	GND	5	GND



Technical data

Mechanical data:		Additional information	
Type of protection	IP54 from the front side		
Operating temperature	-10°C ... +70°C		
Storage	-30°C ... +80°C		
Humidity	max. 95% rF rel.		condensation not permitted
Vibration resistance (50Hz ... 2000Hz)	<200m/s ²		DIN IEC 68-2-6
Shock resistance (11ms)	<300m/s ²		DIN IEC 68-2-27
Housing	plastic red (transparent)		
Operator controls	4 keys, membrane keyboard		
Weight	ca. 70g		

Electrical data:

Power supply	24VDC		
Power consumption	max. 60mA @ 24VDC		
Power supply backup	3.0 ... 3.6VDC		
Power consumption backup	<30µA @ 3VDC		
low-bat-symbol active	<2.8VDC		
Backup	internal Lithium (2200mAh)		external free choice
Display range	-99 999 ... 99 999		
Protection class	3 acco. to IEC 801		
Test mark	CE		

System data, resolution and accuracy:

Resolution	max. 0.01mm		
Suitable magnetic tape/ring	MB500/MR500		
Sensor/magnetic strip gap	max. 2mm		
System accuracy	±0.1mm		
Repeat accuracy	±1 increment		
Travel speed	5m/s		