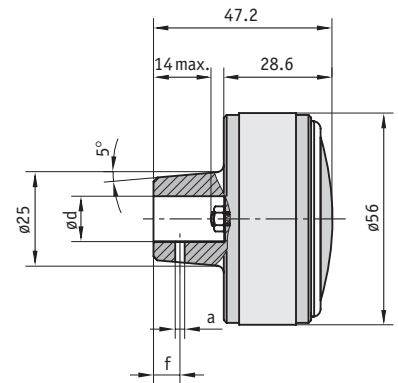


Handwheel HR5

Compact handwheel made of aluminium with permanently fixed position indicator.



Features:

- surface anodised or blank
- various gear ratios and special scales

Option:

- various hub options

Type	$\varnothing dv$	$\varnothing dx$
HR5	7.8	12

$dv = d$ pre-drilled; $dx = d$ max.

Feature	Ordering data	Technical data	Additional information
Bore $\varnothing d$	d pre-dr. A ...	pre-drilled, see table above, value $\varnothing dv$ d max. in mm steps (H7)	standard see table above (smallest bore corresponding to d pre-dr.)
Surface	B ES EF	without varnish black anodised naturally anodised	standard
Gear ratio	••• C	see fold-out page for values	
Rotation direction	I E	clockwise counter-clockwise	
Pointer	1 2	pointer continuously geared one pointer geared and one pointer runs 1:1	
Pin hole (only without key groove)	OS F No. x \varnothing/f	without pin hole see fold-out page	standard no. of pinholes x diameter/dimension f e.g. 2x3.8/12
Hub thread	ONG G No x \varnothing/f	without hub thread see fold-out page	standard no. of hub threads x diameter/dimension f e.g. 2xM4/12
Scale	N VK	normal scale special scale	standard , referenced to the gear ratio customer-specified, for 1st fabrication, no VK
Material		aluminium	
Weight		0.1 kg	

Your ordering data: - - - - - - - -