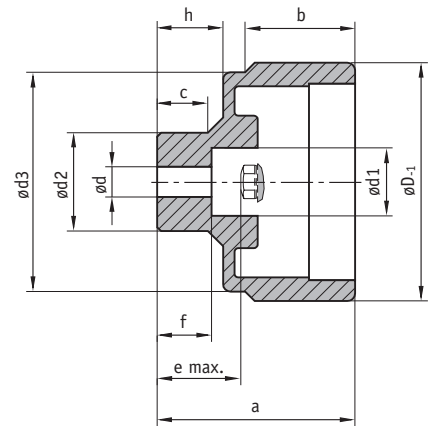


Handwheel HG...

An economically priced plastic handwheel and compact turning handle for housing position indicators.



Features:

- fiber-glass reinforced plastic

Option:

- various hub options
- version with rounded edges for the prevention of dirt/particle ingress

Typ	Hub material	øD	ødv	ød	ød1	ød2	ød3	a	b	c	e	f	h	Suitable for	Weight
HG 5	Plastic	63	5.8	06-12 ^{H9}	13	21	58	49	28.9	14.3	19.2	17.3	14.3	S50/1	0.1 kg
	Metal	63	5.8	06-16 ^{H7}	18	26	58	52	28.9	13.3	22.2	14.3	17.3	S50/1	0.1 kg
HG 10	Plastic	98	5.8	06-16 ^{H9}	16	30	93	56	31.5	18.7	22.8	20.7	18.7	S80/1; SZ80/1	0.2 kg
	Metal	98	5.8	06-16 ^{H7}	25.5	35	93	59	31.5	18.2	25.8	18	21.7	S80/1; SZ80/1	0.2 kg

dv = d pre-drilled

Feature	Ordering data	Technical data	Additional information
Handwheel	HG... A	see table above	
Hub material	A B VA	aluminium plastic reinforced Nirosta	standard
Bore ød	d pre-dr. C ...	pre-drilled, see table above, value ødv d max. in mm steps (H7)	standard see table above (smallest bore corresponding to d pre-dr.)
Key groove	OP D JS9 P9	without key groove transition fit press fit	standard acc. to DIN 6885 T1 acc. to DIN 6885 T1
Pin hole (only without key groove)	OS E No. x ø/f	without pin hole see fold-out page	standard no. of pinholes x diameter/dimension f e.g. 2x3.8/12
Hub thread	ONG F No x ø/f	without hub thread see fold-out page	standard no. of hub threads x diameter/dimension f e.g. 2xM4/12
Turned-down hub	OAN G d1 (f7)xl	without turned-down hub see fold-out page	standard dependent on d max.
Position indicator mounted (*)	PM H PS	position indicator mounted position indicator separate	standard
Material		handwheel: plastic	hub: aluminium (option: Nirosta)
Colour		black	

* separate ordering of a position indicator necessary! (> see pages 9/10)

Your ordering data: - - - - - - - -