

Geared potentiometer GP03/1

Compact rotary encoder for absolute position



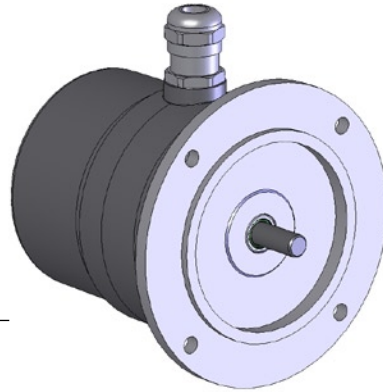
SIKO GmbH

Address
Weihermattenweg 2
79256 Buchenbach

Telephone
+49 7661 394-0

Fax
+49 7661 394-388

eMail
info@siko.de
Internet
www.siko.de



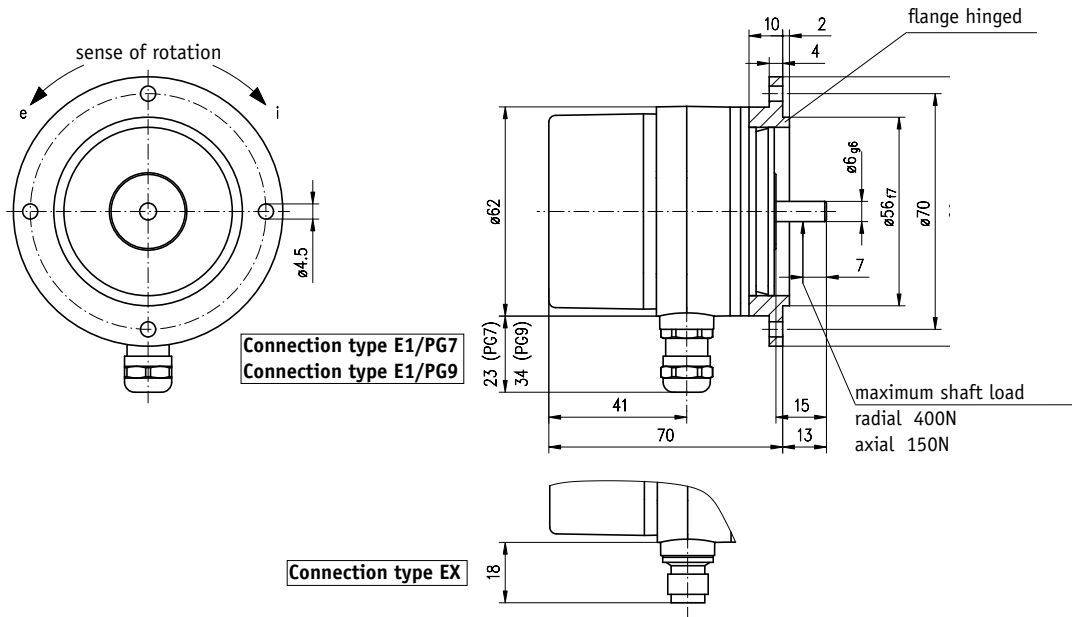
Features:

- solid shaft 6mm
- adaptation to various measurement distances thanks to the broad range of available gear ratios
- compact design
- integrated slip clutch for potentiometer protection
- high protectiontype

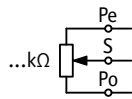
Feature	Order Text	Additional information
Gear ratio	0.2 ... 256 A	
Drive shaft	V/6 B	Solid shaft \varnothing
Type of connection	E1/PG7 E1/PG9 EX C	Cable gland PG7 Cable gland PG9 for connector M12
Potentiometer type	01 02 03 D	1 filament (P01) 10 filament/wire (P01, P05, P10) 10 filament (P01, P05, P10)
Analog output	MWI MWU P01 P05 P10 E	Measurement transducer 4 ... 20mA Measurement transducer 0 ... 10V Potentiometer 1kOhm Potentiometer 5kOhm Potentiometer 10kOhm
Counting direction	i e F	right rising (only with MWI or MWU) left rising (only with MWI or MWU)

Your ordering: GP03/1 - A - B - C - D - E - F

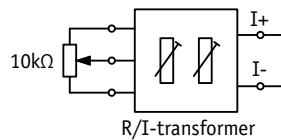
Geared Potentiometer GP03/1



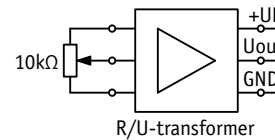
without Measurement transducer



Measurement transducer MWI



Measurement transducer MWU



without Measurement transducer

signal	Po	Pe	S	N.C.
E1 (Terminal)	3	1	2	
EX (Connector pin)	1	2	3	4

Measurement transducer MWI

signal	I+	I-	N.C.	N.C.
E1 (Terminal)	1	2	3	
EX (Connector pin)	1	2	3	4

Measurement transducer MWU

signal	+24VDC	GND	Uout	N.C.
E1 (Terminal)	1	2	3	
EX (Connector pin)	1	2	3	4

Technical data

Gear ratio	0.2 ... 256
Speed	max.500 min ⁻¹
Power supply	24 VDC ±20%
Working temperature	-20°C ... +80°C
Condensation	not permitted
Service life-operations	1 x 10 ⁶ (2 x 10 ⁶)
Certification/rotection class	CE
Protection	IP65
Housing	reinforced plastic / aluminium
Shaft	special steel

Additional information

depending on gear ratio

3 corresponding to IEC 801 according to DIN VDE 0470

Electrical data Potentiometer:

Resistance tolerance	±5%
Linearity tolerance	±0.25% (Potentiometer Type 01, 02, 03)
Load capacity	1W at 70°C (Potentiometer Type 01) 2W at 70°C (Potentiometer Type 02, 03)
Range of rotation	340° ±5° 3600° +10°
Standard residual end pont resistance	0.5% or 1 Ohm

Potentiometer Type 01 (mechanically ricing)
Potentiometer Type 02, 03
(whichever value is higher)

Accessory

83419

Mating connector

4 pins; circular cableconnector; M12