

DigiTurn DK02

The control knob and digital position indicator are incorporated in a compact adjustment unit. The DigiTurn can be universally applied due to the minimum expenditure and space requirement.

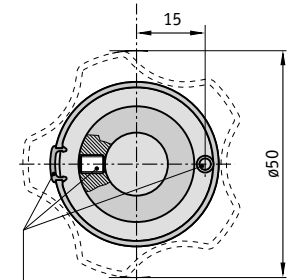
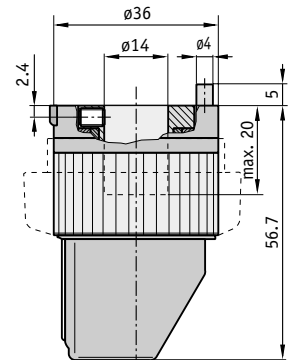


Features:

- Control knob with integrated position indicator
- Various display values
- Lateral display

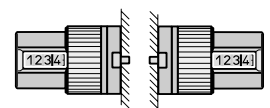
Option:

- Star knob
- Special display ratios



Lid, Grub Screw M4,
Torque Pin
aligned to display „0“

Version 08 Version 09



Feature	Ordering data	Technical data	Additional information
Version	08 09	A	
Display after 1 revolution	e.g 15	B 12/5*; 15; 17/5*; 20; 25; 30; 40; 50; 100	
Comma position	0 or 1,2,3	C e.g. 1 = 0.0 or 2 = 0.00	
Counting direction	I E	D clockwise increasing counter-clockwise increasing	
Hollow shaft bore	14 RH12 RH10 RH8	E ø 14 ^{H7} reducing sleeve on ø 12 ^{H7} reducing sleeve on ø 10 ^{H7} reducing sleeve on ø 8 ^{H7}	standard
Handwheel form	RA ST	F knurled handle star knob	standard
Handwheel colour	FR	G fire red RAL3000	
Counter		4 decades, fine reading	digit size appr. 6 mm
Housing		plastic	
Weight		0.06 kg	
Ambient temperature		max. 80 °C	

* The numbers following the slash „/“ are analytical values, which will not be displayed.

Your ordering data: - - - - - - -