

Digital Position Indicator DA10R/1

Digital indicator, specially designed for large diameters. With its two in-built counters, it is designed for use with wood milling machines.



Features:

- axial seals, dustproof

Option:

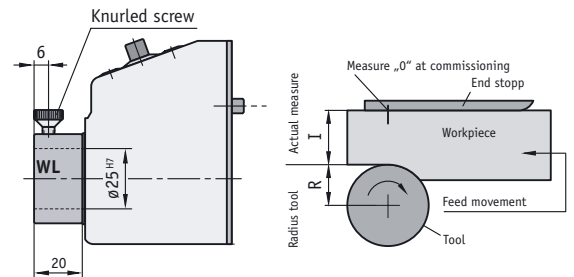
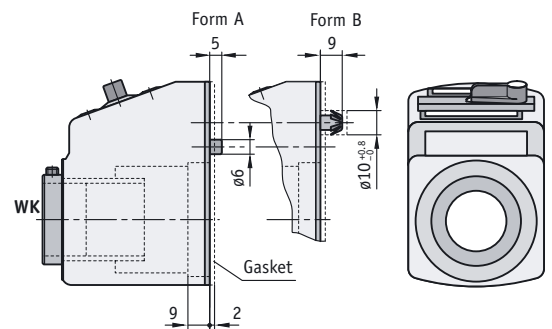
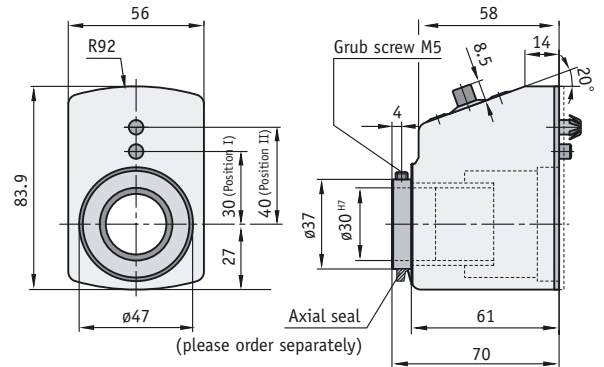
- counter cover made of mineral glass, solvent-resistant
- reduction sleeves for various diameters

DA10R/1

Display after the first revolution	max. velocity (min ⁻¹)
00010	500 (1.500)
00015	500 (1.000)
00020	500 (750)
00025	500 (600)
00030	500
00040	375
00050	300
00060	250
00080	180
00100	150

Caution: velocities >500 min⁻¹ should be operated for a short while only.

$$\text{Formula for max. velocity} = \frac{15.000}{\text{display after the first revolution}}$$



Example of use:

- Counter (1) 5-digit: actual value of workpiece width
- Counter (2) 4-digit: tool radius

A toggle switch between the counters allows for independent adjustment of both counters.

Display	Counting direction*
<p>R 1 2 3 4 Tool radius „R“</p> <p>1 2 3 4 5 Actual measure „I“</p> <p>Fine reading</p>	

For the DA10R/1, suitable reduction sleeves, an axial seal are available (see Accessories), *individually adjustable counting direction

Feature	Ordering data	Technical data	Additional information
Counters		5 decades, fine reading	
Digit height		approx. 6 mm	
Housing		polyamide 6, shockproof	
Weight		0.1 kg	
Ambient temperature		max. +80 °C	

Ordering data

Display after the first revolution	...	A	10, 20, 25, 35, 40, 50, 60, 80, 100, 15/747 wide range of other values on request	/7 = arithmetical value not displayed
Comma position	0	B	0 = 0000	
	1		1 = 000.0	
	2		2 = 00.00	
	3		3 = 0.000	
Counting direct. = ascending values	i	C	ascending values clockwise	
	e		ascending values counter-clockwise	
	i/e		adjustable by the customer	by opening the housing, see annex
	e/i		adjustable by the customer	by opening the housing, see annex
Hollow-shaft diameter	...	D	25, 30	
			RH10, RH20, RH25, RH26	reduction sleeve
Hollow shaft/form	WK	E	hollow shaft short	standard
	WL		hollow shaft long	
Torque pin/form	A	F	form A	standard
	B		form B	
Torque pin/position	I	G	position I	standard
	II		position II	
Housing colour	S	H	black RAL 9005	standard
Viewing window	K	I	plastic	standard
Axial seal	OAD	K	without axial seal	standard
	AD		with axial seal	see "Important information in advance"

Your order: - - - - - - - - - -