

Digital Position Indicator DA08

Very robust digital indicator in a metal housing with integrated zeroing functionality. Available for a great variety of special pitches.

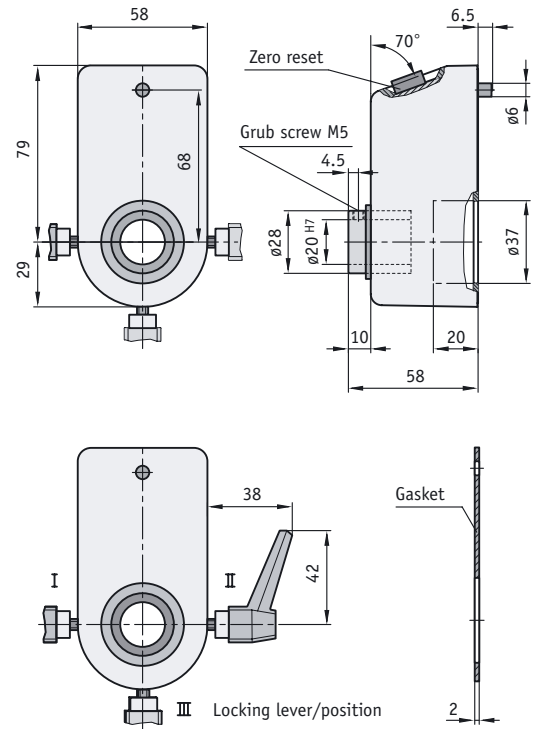


Features:

- special indicated values
- locking lever as design component
- shaft diameters up to max. 35 mm
- display adjustable for "mm" or "inch"
- counters with 4 or 5 decades

Option:

- reduction sleeves for various diameters



DA08

Display after the first revolution	max. velocity (min ⁻¹)	
	with zero position	without zero position
(0)0010	500	1.200
(0)0020	250	600
(0)0025	200	480
(0)0030	165	400
(0)0040	125	300
(0)0050	100	240
(0)0060	85	200
(0)0080	60	150
(0)0100	50	120

Caution: velocities >400 min⁻¹ should be operated for a short while only.

Formula for

- max. velocity with zero position = $\frac{5.000}{\text{display after the first revolution}}$
- max. velocity without zero position = $\frac{12.000}{\text{display after the first revolution}}$

Display	Mounting position with zero reset		Mounting position without zero reset		Counting direction*
 	 01	 03	 02	 04	

For the DA08, suitable reduction sleeves are available (see Accessories), **individually changeable counting direction*

Feature	Ordering data	Technical data	Additional information		
Counting mechanism		4 decades, fine reading			
Digit height		approx. 4.5 mm			
Housing		aluminium die casting			
Weight		0.7 kg			
Counting direction		adjustable			
Zero position		optional			
Ambient temperature		max. +80 °C			
Ordering data					
Version/mounting position	01	A	with zero reset	see the icons on the product page showing the mounting position	
	02		without zero reset		
	03	with zero reset			
	04	without zero reset			
Counting mechanism/digits	4	B	4 decades	standard	
	5		5 decades		
Display after the first revolution	...	C	10, 20, 25, 35, 40, 50, 60, 80, 100, 15/8	/8 = arithmetical value not displayed	
			wide range of other values on request		
Comma position	0	D	0 = (0)0000		
	1		1 = (0)000.0		
	2		2 = (0)00.00		
	3		3 = (0)0.000		
	4		4 = (0).0000		only with 5 decades
Counting direct. = ascending values	i	E	ascending values clockwise		
	e		ascending values counter-clockwise		
	e/i		adjustable by the customer		by opening the housing, see annex
Hollow-shaft diameter	...	F	19, 20, 25, 35		
			VA20		stainless steel
			RH8, RH10, RH12, RH14, RH16, RH18		reduction sleeve
Housing colour	0	G	orange RAL 2004	standard	
	S		black RAL 9005		
	R		red RAL 3004		
	rev		unvarnished		
Locking lever/position	OKL	H	without locking lever	standard	
	I		position I		
	II		position II		
	III		position III		

Your order:

DA08	-	<input type="text" value="A"/>	-	<input type="text" value="B"/>	-	<input type="text" value="C"/>	-	<input type="text" value="D"/>	-	<input type="text" value="E"/>	-	<input type="text" value="F"/>	-	<input type="text" value="G"/>	-	<input type="text" value="H"/>
------	---	--------------------------------	---	--------------------------------	---	--------------------------------	---	--------------------------------	---	--------------------------------	---	--------------------------------	---	--------------------------------	---	--------------------------------