

Translation Module AEA111

This high-resolution module converts the position information of the magnetic sensor MSA111 into SSI + RS485 signals. In addition the module provides the analog 1Vss Sin/Cos signals for real time data interpretation.



SIKO GmbH

Address

Weiherrmattenweg 2
79256 Buchenbach

Telephone

+49 7661 394-0

Fax

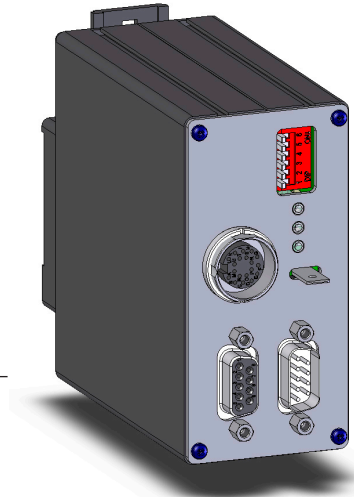
+49 7661 394-388

eMail

info@siko.de

Internet

www.siko.de



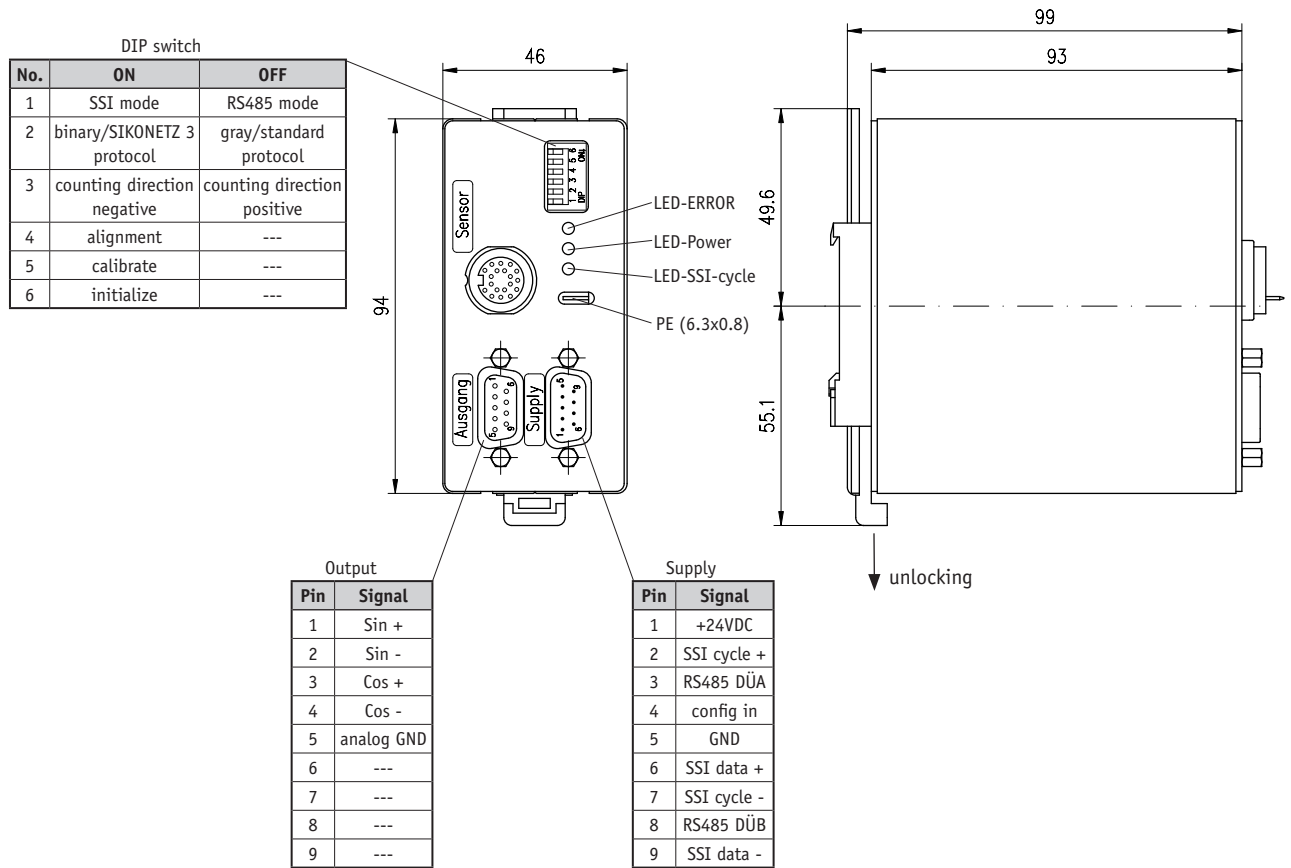
Features:

- snap-in module for easy mounting
- all connections are pluggable
- parameter programming via DIP switches
- SSI and RS485 interface
- possibility for external bus connection (Interbus, CAN-BUS, Profibus) with SIKO-IF09xx module.

Feature	Order text	Additional information
Interface	SSI A	standard
Output	1VSS B Sin/Cos	
Software	S C	standard

Your ordering: - - -

Translation Module AEA111



Technical data

Additional information

Mechanical data:		
Housing	aluminium	snap-in module for mounting on top-hat rails
Elektrical data:		
Power supply	24VDC ± 20%	
Power consumption	< 250mA @24VDC	
Interface	SSI + RS485	
Realtime requirements	real-time signal processing	Sin/Cos output
Interference protection class	3	IEC-61000-6-2
Test mark	CE	
Environmental conditions:		
Operating temperature	0°C ... +60°C	
Storage temperature	-30°C ... +80°C	
Humidity	not permitted	
Type of protection	IP20	
System data:		
Resolution SSI/RS485	max. 1µm	
Suitable magnetic sensor/tape	MSA111, MBA111	
Pole length	1mm	
Period length Sin/Cos output	1000µm	
Travel speed static operation	< 1m/s (SSI)	
Travel speed dynamic operation	< 10m/s (Sin/Cos)	
System accuracy	±10µm	
Repeat accuracy	max. ±2µm	
Measuring length	max. 4000mm	