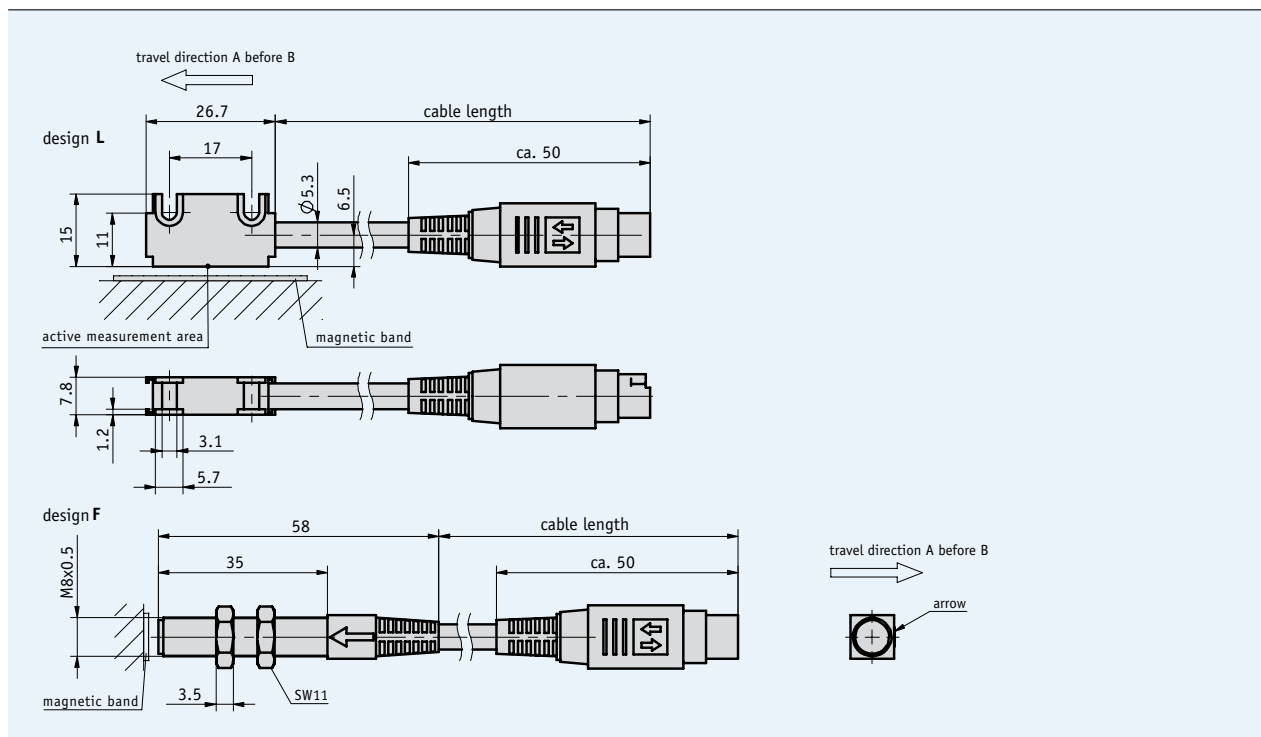


Magnetic Sensor MS500

Incremental, miniature design

Profile

- Compact design of sensor and connector
- To be connected to MA502, MA506 or AS510/1
- Works with magnetic band MB500
- Max. sensor/band reading distance 2 mm



Mechanical data


Feature	Technical data	Additional information
Scale embodiment	MB500	
System accuracy	depends on downstream electronics unit	
Repeat accuracy	depends on downstream electronics unit	
Sensor/band reading distance	0.1 ... 2 mm	
Travel speed	depends on downstream electronics unit	
Housing	aluminum, varnished red steel	sensor design L sensor design F
Sensor cable	PVC	drag chain-compatible
Operating temperature	-20 ... +70 °C (sensor) 0 ... +60 °C (connector)	
Storage temperature	-20 ... +85 °C	
Humidity	100 % rh	condensation permitted
Protection category	IP67	
Vibration resistance	5 ... 2000 Hz bei 20 g	
Shock resistance	200 g at 11 m/s	
Max. measuring length	infinite	

Electrical data

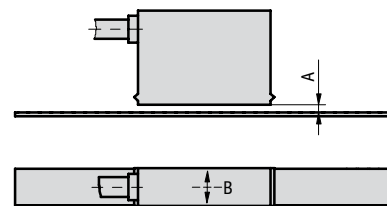
Feature	Technical data	Additional information
Operating voltage	feed via magnetic display/ downstream electronics unit	
Current consumption	depends on magnetic display/ downstream electronics unit	
Type of connection	Mini-DIN 6-pin	
Interference protection class	3	according to IEC 801
Real-time requirement	real-time signal processing	

Mounting instruction

Sensor/band reading distance A	max. 2 mm
Lateral offset B	max. ±2 mm

 The connection must not be changed (e.g., different cable, cable length ...)

Sensor/band reading distance (symbolic sensor representation)



5.2

Order

Order table

Feature	Order data	Specifications	Additional information
Sensor design	L	rectangular	
	F	round	
Cable sheath	PVC	oil-resistant	
	PUR		
Cable length L	...	1 ... 20 m, in steps of 1 m	

Order code

MS500 - - -

Scope of delivery: MS500, User information, Allen fastening screws M3 x 14 mm ISO 4762, lock washers M3 DIN 7980, strain relief for sensor cable

 **Additional information:**

Short Description, Technical Details
Product Overview

Page 46 cont.
Page 4 cont.